



## Aiming High for Disabled Children, Surrey (AHDC Surrey)

### Children and Young People's Questionnaire 2009

## South West Surrey Graphs



Date: 30<sup>th</sup> September 2009

Written By: Justine Loggenberg

## About the activity:

The purpose of the Children and Young People's Questionnaire 2009 was to gather information from children and young people regarding the types of short break activities they would like; and to then distribute the findings to existing and potential providers to inform their planning.

In total, 17 settings agreed take part. Of the 453 children and young people who were approached, 237 children took part. At three of the settings questionnaires were carried out by the staff of that setting. The remaining 14 settings were visited by Justine Loggenberg of the AHDC team and/or Stephanie Anderson of the Children's Fund team.

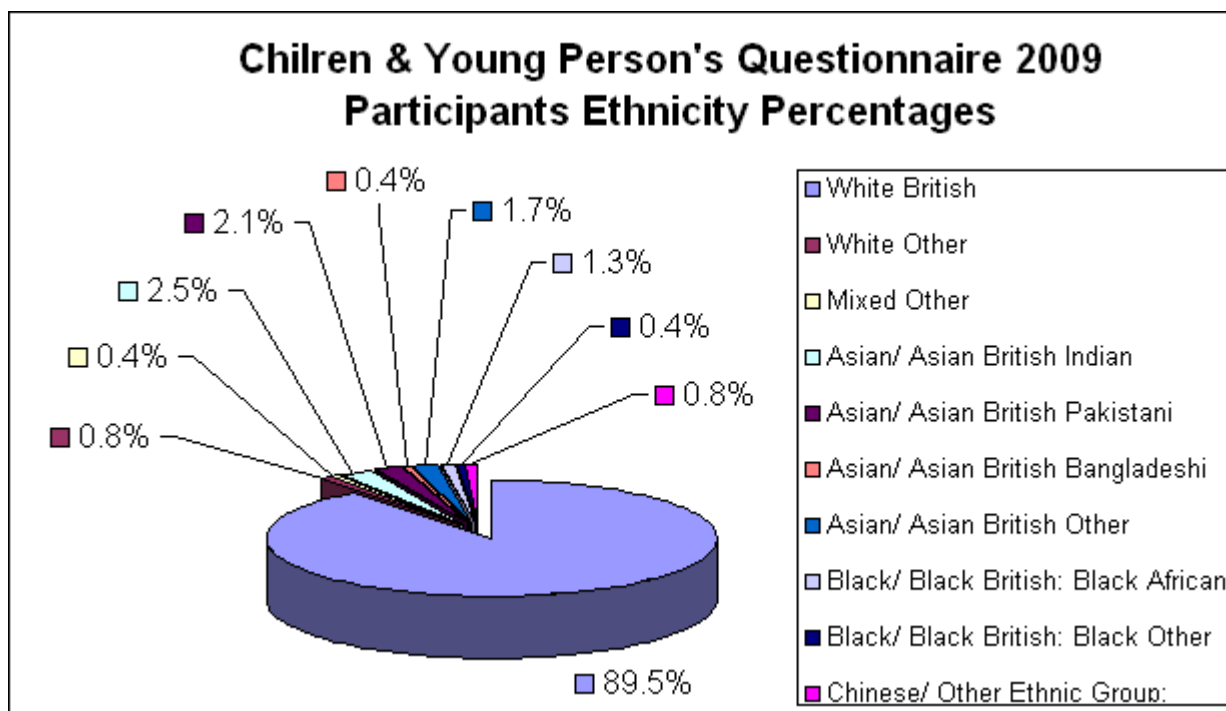
Children and young people conveyed their preferences about sports, activities and outings via one or more of the following methods:

- conversation/ discussion
- drawing pictures
- making collages
- completing questionnaires
- using talking mats
- eye pointing

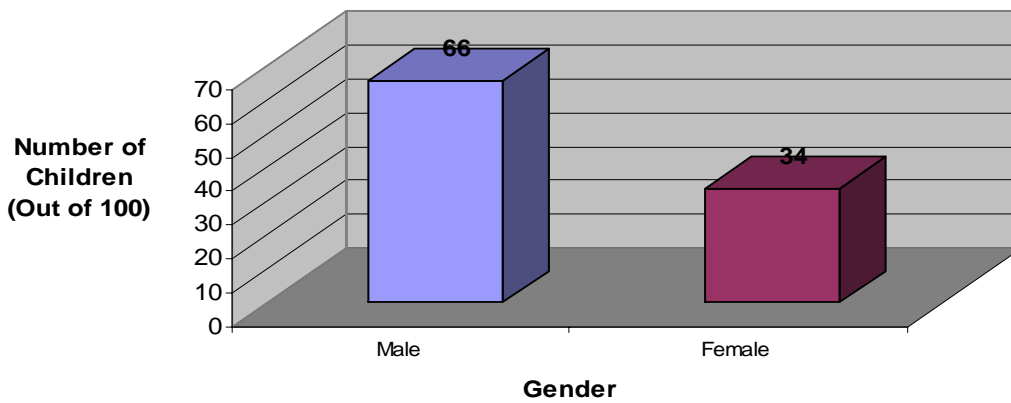
The information recorded about each child or young person included their age, primary disability, gender, ethnicity and the area of Surrey in which they took part. No information that could be used to identify an individual was recorded.

From this area, 100 of you gave us your views. You came from:

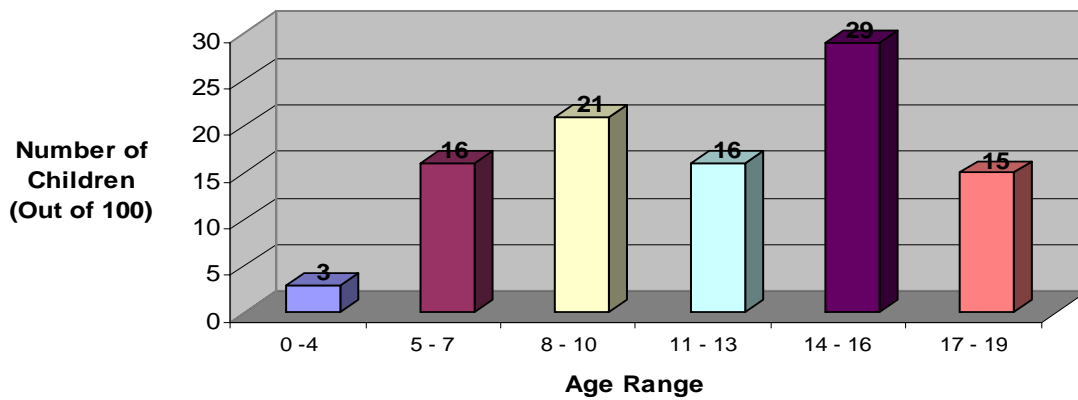
- National Autistic Society After School Club, Godalming
- The Ridgeway Community School
- Disability Challengers Guildford
- Disability Challengers Farnham,



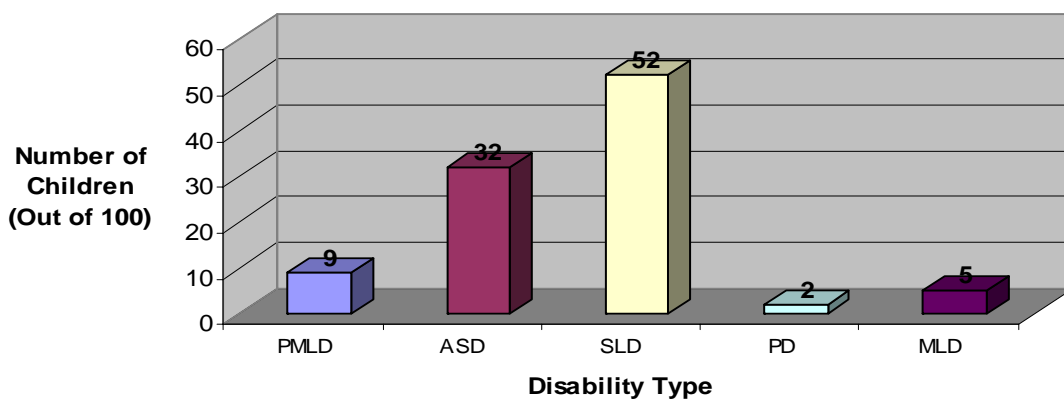
**South West Surrey Gender Breakdown**



**South West Surrey Age Range Breakdown**



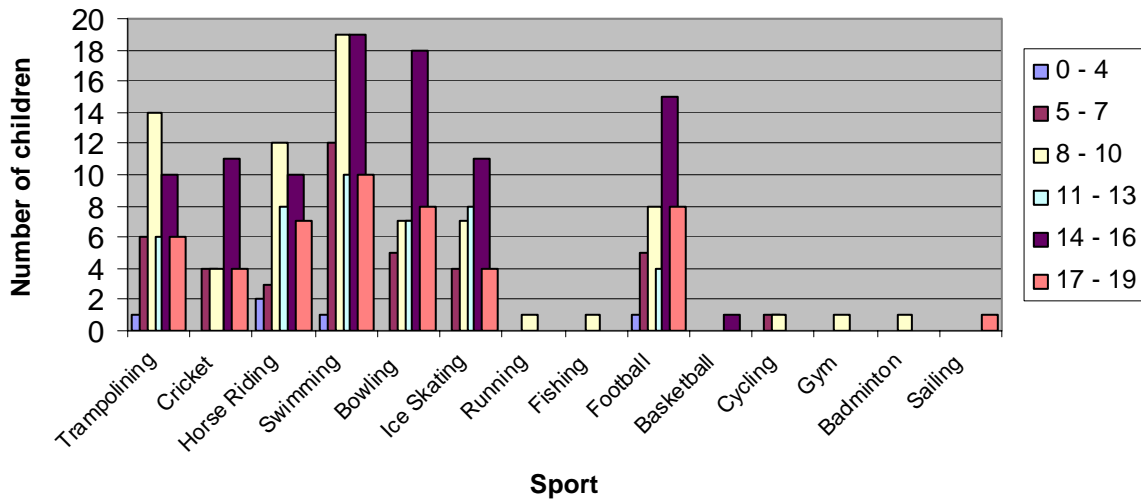
**South West Disability Type Breakdown**



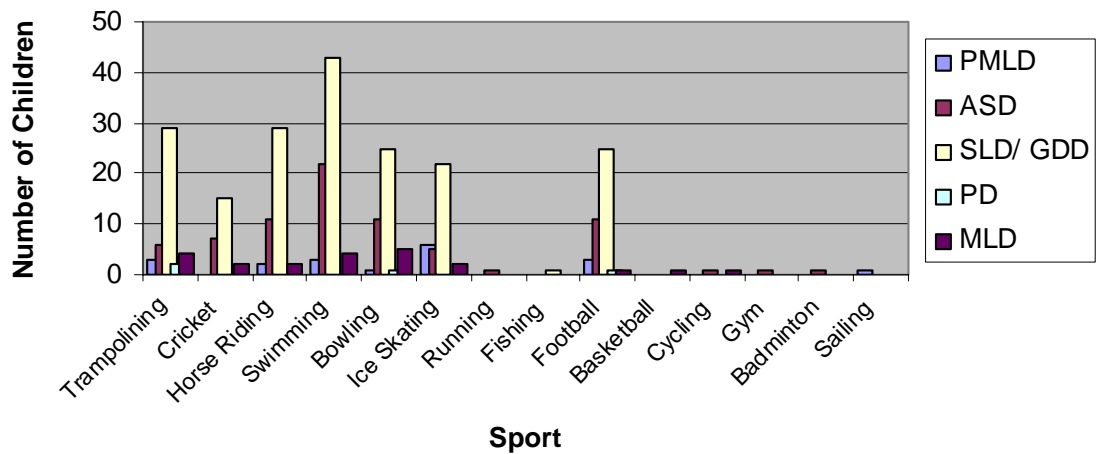
Disability Types:

- PMLD: Profound and Multiple Learning Disabilities
- ASD: Autistic Spectrum Disorder
- SLD: Severe Learning Disability
- PD: Physical Disability
- MLD: Moderate Learning Disability

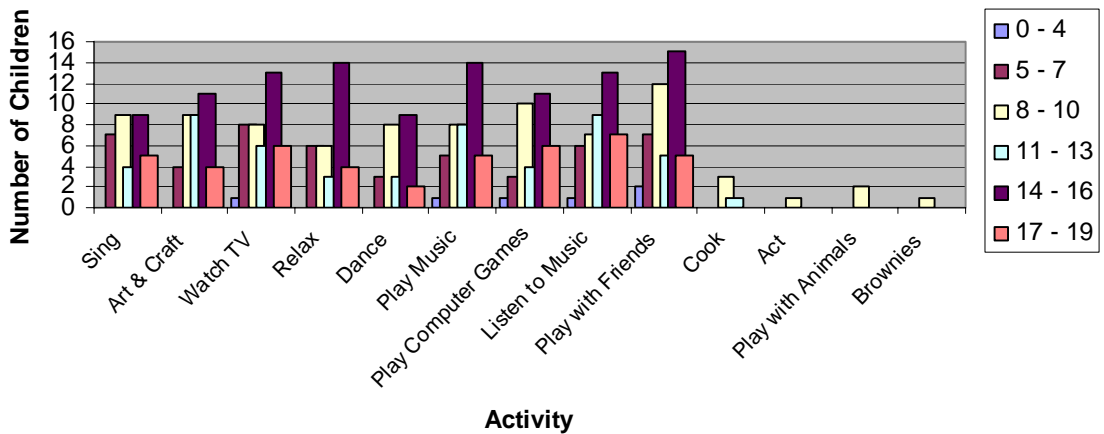
### South West Surrey: Sport/Age

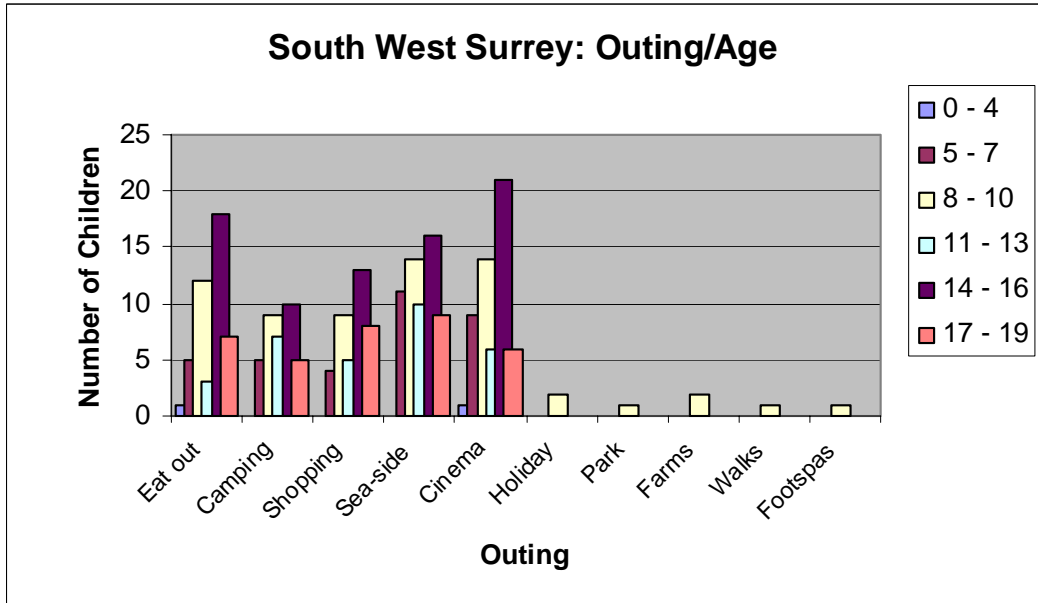
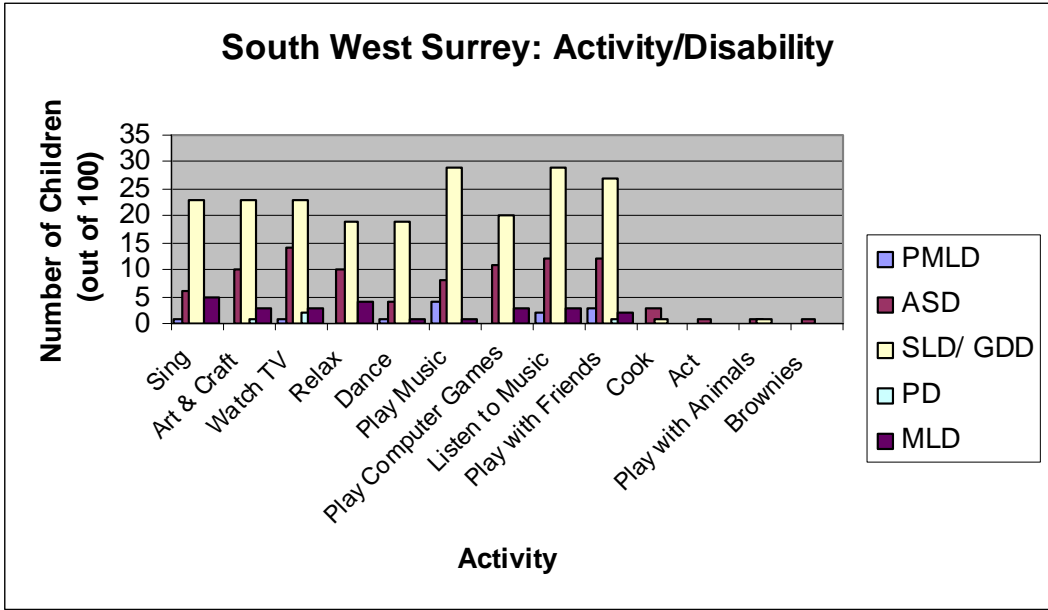


### South West Surrey: Sport/Disability



### South West Surrey: Activity/Age





### South West Surrey: Outing/Disability

